

All-in-One Photogrammetry Scanner

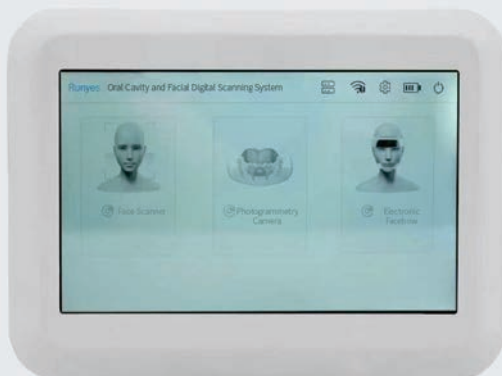
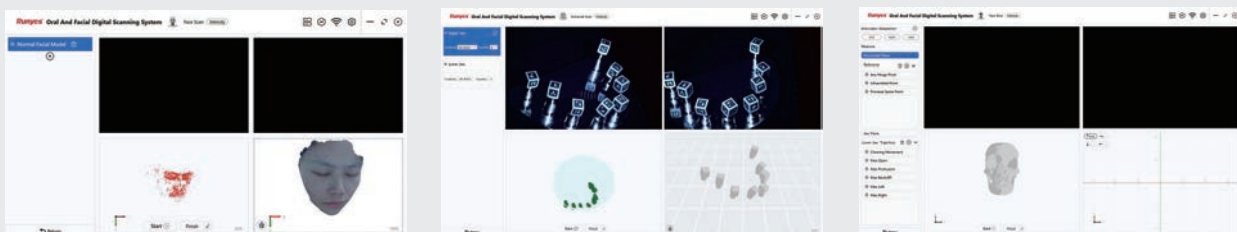
# Portable Digital Implant Positioning System

Seamlessly combining Photogrammetry Camera, Face Scanner,  
and Electronic Facebow for fast, precise, and efficient scanning.



# Runyes Portable Digital Implant Solution

- 3-in-1 Scanning Solution: Combines a Photogrammetry Camera, Face Scanner, and Electronic Facebow. It accurately captures intraoral implant positions, facial 3D structures, and dynamic occlusion, fulfilling diverse patient data acquisition needs.
- Cranio-Maxillofacial 3D Reconstruction: Supports fast and precise digital workflows for multi-tooth implants, restorations, orthodontics, and other treatments.
- Streamlined Workflow: No need to switch between devices, saving clinical operation time.
- Wireless Touchscreen: Intuitive operation, stable data transmission, and adaptable to various clinical scenarios.
- Compact & Space-Saving: Fits easily into any clinical setup.



- 1) Photogrammetry Camera Accuracy: 20–30  $\mu\text{m}$
- 2) Face Scanner Accuracy: 0.1 mm / 100  $\mu\text{m}$ ; Scanning Time: 30-40s
- 3) Electronic Facebow Measurement Accuracy: 0.2 mm



## Runyes Medical Instrument Co.,Ltd.

Add:No. 456, Tonghui Road, Jiangbei Investment & Pioneering Park C, Ningbo,China  
Tel:+86-574-27709922 Fax:+86-574-27709923 Http://en.runyes.com  
E-mail:runyes@runyes.com

Revision: 9102000062

Runyes reserves the right to make modifications without prior notice.



Facebook



Instagram