

## Photogrammetry Camera

Runyes Photogrammetry Camera uses high-precision image detection and measurement technology, allowing the acquisition of the implant position data of the edentulous patient with high accuracy, providing precise input for denture design, increasing the success rate of the surgery and patient satisfaction, with precision and comfort in one step.

Reshape Brand New Edentulous Implant Experience  
Open a New Chapter for Digital Implant



## Creating a New Workflow for Edentulous Implant Treatment



### Product Specifications

<b>Input Voltage:</b> 15V 1.5A	<b>Number of Measurement Points:</b> 2 to 8
<b>Battery Capacity:</b> 2500mA	<b>Angle Measurement Accuracy:</b> 1.0
<b>Measuring Space:</b> 90°*90°*50mm	<b>Position Measurement Accuracy:</b> 20-30µm
<b>Measuring Distance:</b> 260 mm	<b>Weight:</b> 1.3kg (Bracket Not Included)
<b>Measuring Time:</b> 20s Half-Arch Impression	<b>Product Size:</b> 178.9*174.3*75mm (Bracket Not Included)



Runyes Medical Instrument Co.,Ltd.

Add:No. 456, Tonghui Road, Jiangbei Investment & Pioneering Park C, Ningbo,China  
Tel:+86-574-27709922 Fax:+86-574-27709923 Http://en.runyes.com  
E-mail:runyes@runyes.com



**Runyes**  
FOCUS ON DENTAL

**Runyes**  
FOCUS ON DENTAL

## iGrapher G6 Photogrammetry Camera

Specifically Designed for  
Edentulous Implant Digital Impression



*For a better clinical experience!*

## Product Features

### 01 High Accuracy

With a position measurement accuracy of better than 20-30µm and an angle measurement accuracy of better than 1.0°, our cutting-edge image detection and measurement technology ensures flawless impressions every time. This level of precision enables accurate treatment and restoration, providing a solid foundation for successful implant procedures and improving surgical outcomes for edentulous patients.



### 02 20s Half-Arch Scan

The scan process is highly efficient, taking less than 20 seconds to complete a half-arch scan, while delivering exceptionally accurate relative implant positioning. This rapid yet precise data acquisition enhances workflow efficiency, improves treatment planning, and ensures seamless integration with digital implant workflows.



### 03 More Comfortable

Move beyond traditional impressions with a contact-free approach that minimizes discomfort, shortens treatment time, and enhances the patient experience.



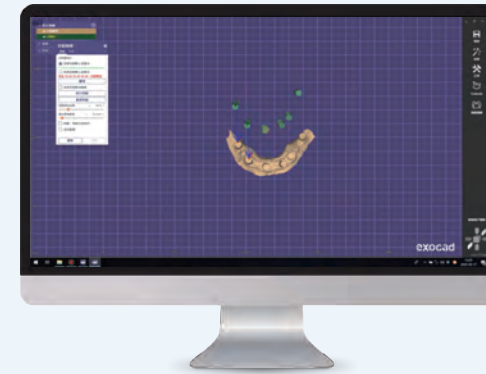
### 04 High Stability

The impression taking has a stable and consistent accuracy surpassing the traditional manual impressions; eliminates the complex processes of traditional impression taking, and improves the overall efficiency of denture design and fabrication.



### 05 Simple Impression-taking Process

The extraoral impression of the relative implant position can be completed in three steps: install the scan body, measure, and export the STL file.



### 06 Data Openness

The extraoral scan model files can be imported into design software such as EXOCAD.

### 07 Highly Versatile

Compatible with all intraoral scanner brands on the market.



### 08 No Pre-Use Calibration Required

The system maintains accuracy without the need for calibration before each use, ensuring a seamless and efficient workflow.



### 09 2500mAh Long Battery Life

Works continuously for 3 hours on a full charge.

### 10 1.3kg Lightweight Design

Lightweight design for the body, allowing for long-lasting work without fatigue.



### 11 Affordable Scanbody

Made of PEEK material using laser printing, Can withstand high-temperature and high-pressure sterilization for over 100 uses, Ensuring low procurement costs in the long run.

